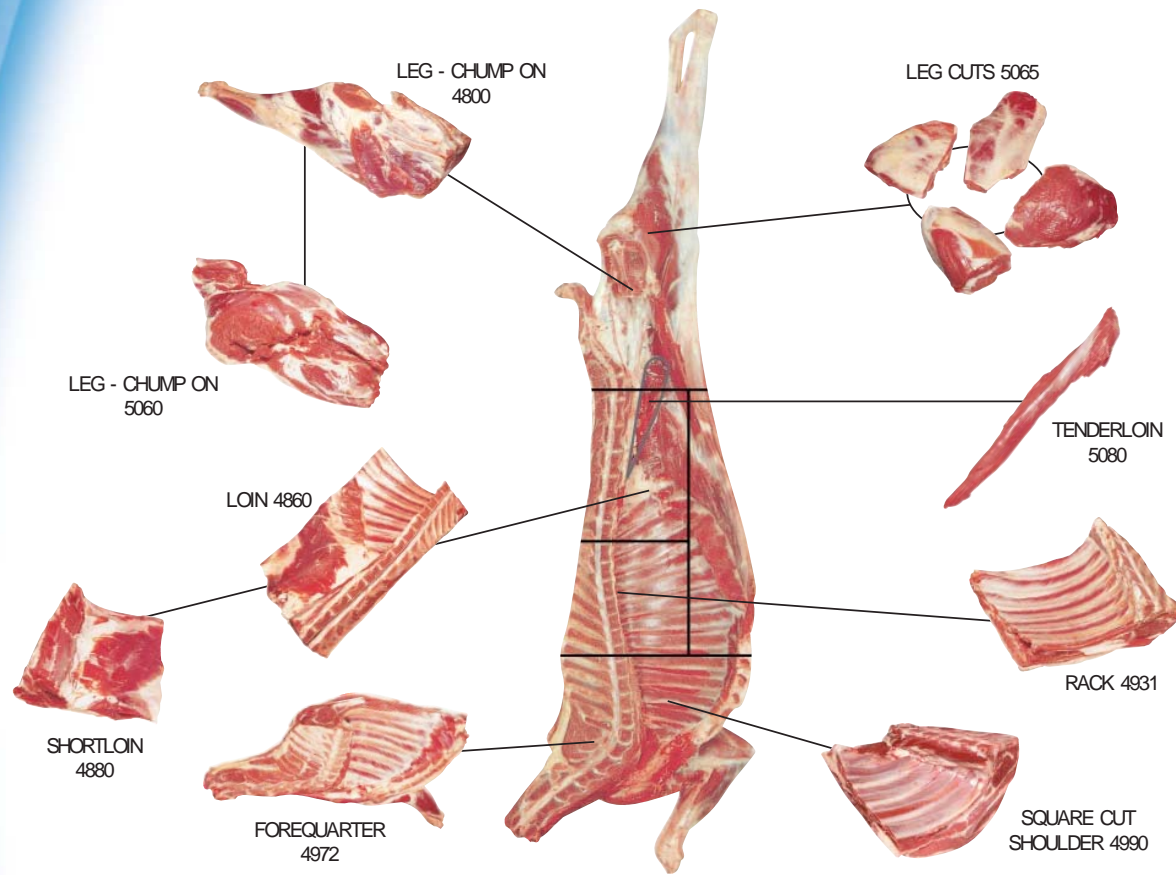


# Goat Primal Cuts



# Goat Carcase

H.A.M. Code: 4640

Goat Carcase includes all parts of the body skeletal musculature and bones.

**Specification Tips:**

- Kidneys - Kidney fat retained or removed.
- Specify carcase weight class or range.
- Specify fat class measurement.



**Note:** Goatmeat primal cuts and H.A.M. code numbers are the same reference as Lamb / Sheepmeat primal cuts and descriptions.



LEG- CHUMP ON - H.A.M. Code: 4800



LEG CUTS - H.A.M. Code: 5065



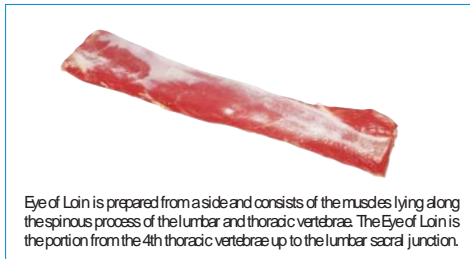
FOREQUARTER - H.A.M. Code: 4969



SHORTLOIN - H.A.M. Code: 4880



RACK - H.A.M. Code: 4931



Eye of Loin is prepared from a side and consists of the muscles lying along the spinous process of the lumbar and thoracic vertebrae. The Eye of Loin is the portion from the 4th thoracic vertebrae up to the lumbar sacral junction.

EYE OF LOIN - H.A.M. Code : 5142



SHORTLOIN CHOPS

FOREQUARTER CHOPS